

DTC	P0135	Oxygen Sensor Heater Circuit Malfunction (Bank 1 Sensor 1)
------------	--------------	---

DTC	P0141	Oxygen Sensor Heater Circuit Malfunction (Bank 1 Sensor 2)
------------	--------------	---

DTC	P0155	Oxygen Sensor Heater Circuit Malfunction (Bank 2 Sensor 1)
------------	--------------	---

DTC	P0161	Oxygen Sensor Heater Circuit Malfunction (Bank 2 Sensor 2)
------------	--------------	---

CIRCUIT DESCRIPTION

Refer to DTC P0125 on page [DI-43](#).

DTC No.	DTC Detecting Condition	Trouble Area
P0135 P0141	When heater operates, heater current exceeds 2 A (2 trip detection logic)	<ul style="list-style-type: none"> • Open or short in heater circuit of heated oxygen sensor • Heated oxygen sensor heater • ECM
P0155 P0161	Heater current of 0.2 A or less when heater operates (2 trip detection logic)	

HINT:

- Bank 1 refers to bank that includes cylinder No.1.
- Bank 2 refers to bank that does not include cylinder No.1.
- Sensor 1 refers to the sensor closer to the engine body.
- Sensor 2 refers to the sensor farther away from the engine body.

WIRING DIAGRAM

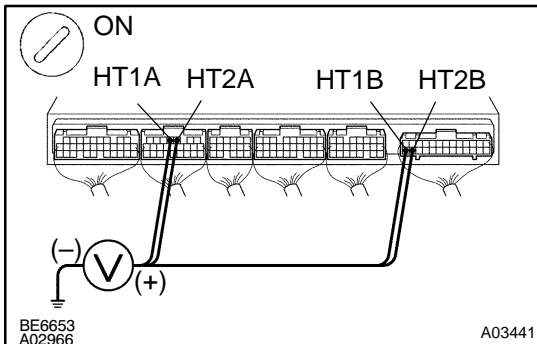
Refer to DTC P0125 on page [DI-43](#).

INSPECTION PROCEDURE

HINT:

Read freeze frame data using LEXUS hand-held tester or OBD II scan tool. Because freeze frame records the engine conditions when the malfunction is detected. When troubleshooting, it is useful for determining whether the vehicle was running or stopped, the engine was warmed up or not, the air-fuel ratio was lean or rich, etc. at the time of the malfunction.

1 Check voltage between terminals HT1A, HT2A, HT1B, HT2B of ECM connectors and body ground.



PREPARATION:

- Remove the engine room ECM cover and hood.
- Turn the ignition switch ON.

CHECK:

Measure the voltage between terminals HT1A, HT2A, HT1B, HT2B of the ECM connectors and body ground.

HINT:

- Connect terminal HT1B to bank 2 sensor 1.
- Connect terminal HT2B to bank 2 sensor 2.
- Connect terminal HT1A to bank 1 sensor 1.
- Connect terminal HT2A to bank 1 sensor 2.

OK:

Voltage: 9 – 14 V

OK

Check and replace ECM (See page [IN-32](#)).

NG

2 Check resistance of heated oxygen sensor heater (See page SF-69).

NG

Replace heated oxygen sensor.

OK

Check and repair harness or connector between EFI main relay (Marking: EFI) and heated oxygen sensor, and heated oxygen sensor and ECM (See page [IN-32](#)).